

Site 3 coLaboratory

An Interactive Art Proposal for Burning Man 2010

The Heart Machine

<http://www.site3.ca/projects/theheartmachine/>

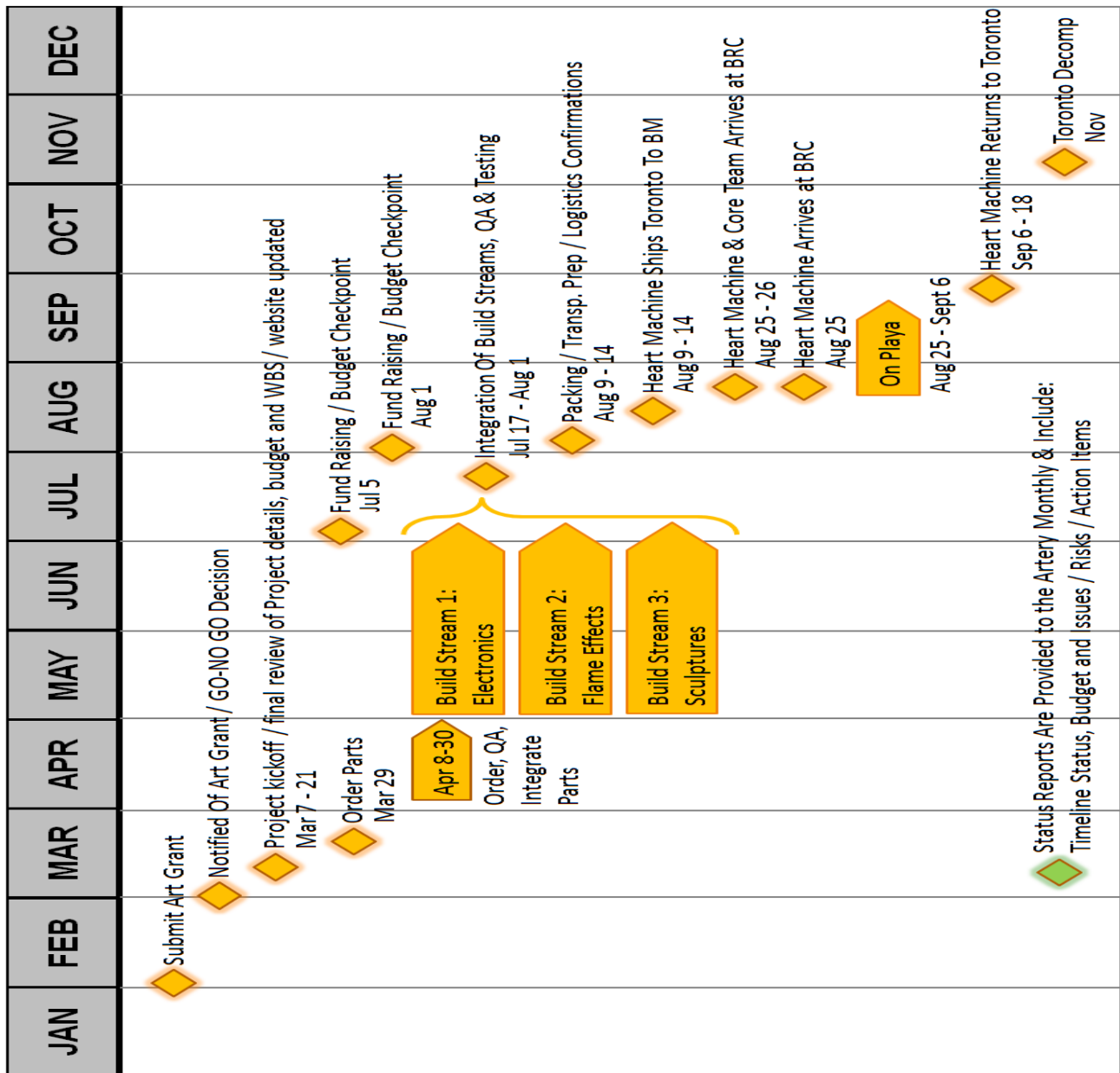


PROJECT SCHEDULE

Artist Summary

- Concept Artist:** Christine Irving
Email: christine (dot) irving (at) gmail (dot) com
Location: Toronto, Ontario
BM Community: Toronto, BurnT
History: 9 Years at Burning Man and 2 years as co-lead for Toronto Decompression (TComp)

Timeline Summary



Site 3 coLaboratory

An Interactive Art Proposal for Burning Man 2010

The Heart Machine

<http://www.site3.ca/projects/theheartmachine/>



PROJECT SCHEDULE

Artists and Core Team (Crew)

We have a fantastic crew of professionals and bootstrap playa veterans sprinkled with a dash of eager virgins. Our crew is broken into several project areas with some crew members spanning more than one area by choice:

- Build Stream 1 - Electronic and Software Components
- Build Stream 2 - Mechanical and Flame effect Components
- Build Stream 3 - Interaction, Sculptural and Design Components
- Overall Project Management and Coordination
- Fund Raising and Communications
- Just Get'R'dun

We will recruit other dedicated playa crew members from our local Canadian communities. All crew members are expected to participate in the build, maintain and cleanup of the Heart Machine while on the playa.

Our core team in alphabetical order:

- Pat Ford (realtime safety critical systems architect)
- Seth Hardy (Computer Science; lead software architect)
- Christine Irving (project manager and concept creator and task master)
- Alex Leitch (programmer and art fund raiser; goddess of getting stuff done)
- Neko (Product and Fashion Designer; builds cool shit and goddess of fabrication)
- Chris North (Post Grad in Interdisciplinary Design Strategy; sculptural concept man & design coordinator)
- John Rose (building contractor; flame effects lead)
- Max Stevens-Guille (MSc Computer Science; electronics design)
- Peter Stevens-Guille (MSc Systems Design; lead mechanical engineer)
- Mark Szilard (B. Eng , Chemical Engineering; flame effects consultant)
- John Yoxall (the man with the on playa plan and resident wine expert)
- Toronto Burning Man community and our sister communities (pARTicipants)

Always Have a Plan B

The crew of the Heart Machine have been on the playa long enough to know that you must not only have a Plan B but a Plan C, perhaps a Plan D and then a very robust twisted sense of humour. To compensate that Murphy is alive and well on the playa, the Heart Machine will design and bring two additional interaction connections should the first human connection fail due to damage or playafacts of life.

Backup Option 1: Run CAT5 cable in the trenches and use an insulated closed loop to complete the connection

Backup Option 2: Run CAT5 cable in the trenches and use big fun buttons or interaction at each sculpture to complete the connection; participants must coordinate their movements to engage the flame effects. Different movements invoke different sequences that reward participants as a group

Site 3 coLaboratory

An Interactive Art Proposal for Burning Man 2010

The Heart Machine

<http://www.site3.ca/projects/theheartmachine/>



PROJECT SCHEDULE

Timeline Details

Dates	Activities
March 1 - 2	Notification of grant status (celebrate or wallow) GO/NO GO DECISION BASED ON GRANT STATUS
March 7	The Heart Machine project kickoff meeting
March 8 - 19	Final review and confirmation of project work breakdown structure, materials, budget, team members, project plan, action items and communications
March 21	Project website updated
March 29	Order parts and email receipts to Artery (project status report)
April 8 - 23	Delivery of parts and review fund raising activities* for the summer
April 24 - 30	QA parts and integration (project status report to Artery)
May 1 - July 4th	<ul style="list-style-type: none">• Build Stream 1: Assemble, program & manage electronic components• Build Stream 2: Assemble, safety & manage flame effect components• Build Stream 3: Assemble and integrate sculptural and design components• Fund raising activities (parties, raffles, test the heart machine, etc.)
July 5	Fund raising checkpoint (project status report to Artery and email receipts)
July 17 – August 1	Integration of build streams, QA and testing
August 1	Project checkpoint of transportation, budget, fund raising and integration sign-off by all build teams (project status report to Artery & final transportation cost*)
August 9 - 14	Packing and transportation prep / logistics confirmations
August 16	The Heart Machine ships via truck from Toronto to BM
August 25	The Heart Machine arrives on playa (project status report to Artery)
August 26	Arrival of remaining primary build team members (10), registration at artery, build logistics review and confirmation with Artery and camp setup
August 26 - 27	<ul style="list-style-type: none">• Transportation of the Heart Machine to playa location, trenching (if required)• collection of propane tank donation from Eric Smith• Initial build setup and electronics/component testing without fuel. Walkthrough of team roles and schedule for the playa.• Follow up with Artery on any issues and provide status update if required
August 28	Onsite delivery of fuel and testing of the Heart Machine with Fuel components
August 29	Contingency day for troubleshooting / retesting
August 30	First run with eager playa metropolis citizens / contingency day for retesting

Site 3 coLaboratory

An Interactive Art Proposal for Burning Man 2010

The Heart Machine

<http://www.site3.ca/projects/theheartmachine/>



PROJECT SCHEDULE

Dates	Activities
August 30 - Sept 4	The Heart Machine runs every night for 4 hours or as long as we have fuel (80 gallons); tanks will be purged every tank with onsite delivery the next day
September 5	Option for one additional night if fuel and circumstances permit
September 5 - 6	Cleanup, LNT activities, main camp and site transportation prep and logistics. Review site with the Artery for sign-off
September 6 - 8	The Heart Machine ships via truck from BM to Toronto
September 18	The Heart Machine arrives back in Toronto and cleaned up for Tcomp

***Important Note:** the status report will include any budget reductions due to fund raising / donations / money saved if we secure a better transportation contract prior to August 1. Timelines include slack for contingencies, troubleshooting and delays.

*****Important Note:** The large transportation pricing is an initial cost for a 26' Uhaul truck rental over 28 days. We are confident we can half the cost of our shipping by: (1) funding the gas & food of a Toronto community member to transport the art piece, (2) renting a smaller vehicle or (3) negotiating a better rate with a shipper we trust. We do not want to start the negotiation process until we know the Artery is interested making the Heart Machine happen; this is a first major art piece for eastern Canada and the Ontario community.

